



CONSTRUCTION ALERT

Road Closures Along Fargo And 7 1/2 Avenues In Kings County

Kings County, Calif. – The California High-Speed Rail Authority (Authority), in cooperation with design-build contractor Dragados-Flatiron Joint Venture (DFJV), announces multiple closures along Fargo and 7 1/2 avenues in Kings County for work on a high-speed rail structure. Work is scheduled to begin on Monday, Sept. 23, 2024 and will continue through Friday Jan. 31, 2025.

This work is part of Construction Package 2-3 (CP 2-3), the 65-mile stretch of high-speed rail between East American Avenue in Fresno County and one-mile north of the Tulare-Kern County line.

Closure And Detour Information:

Multiple Closures In Kings County For Work On A High-Speed Rail Structure:

- Road closure along Fargo Avenue, between Seventh and 8 1/2 avenues.
- Road closure along 7 1/2 Avenue, between Grangeville Boulevard and Fargo Avenue.

Work is scheduled to begin on Monday,

Sept. 23, 2024, and will continue through Friday, Jan. 31, 2025.

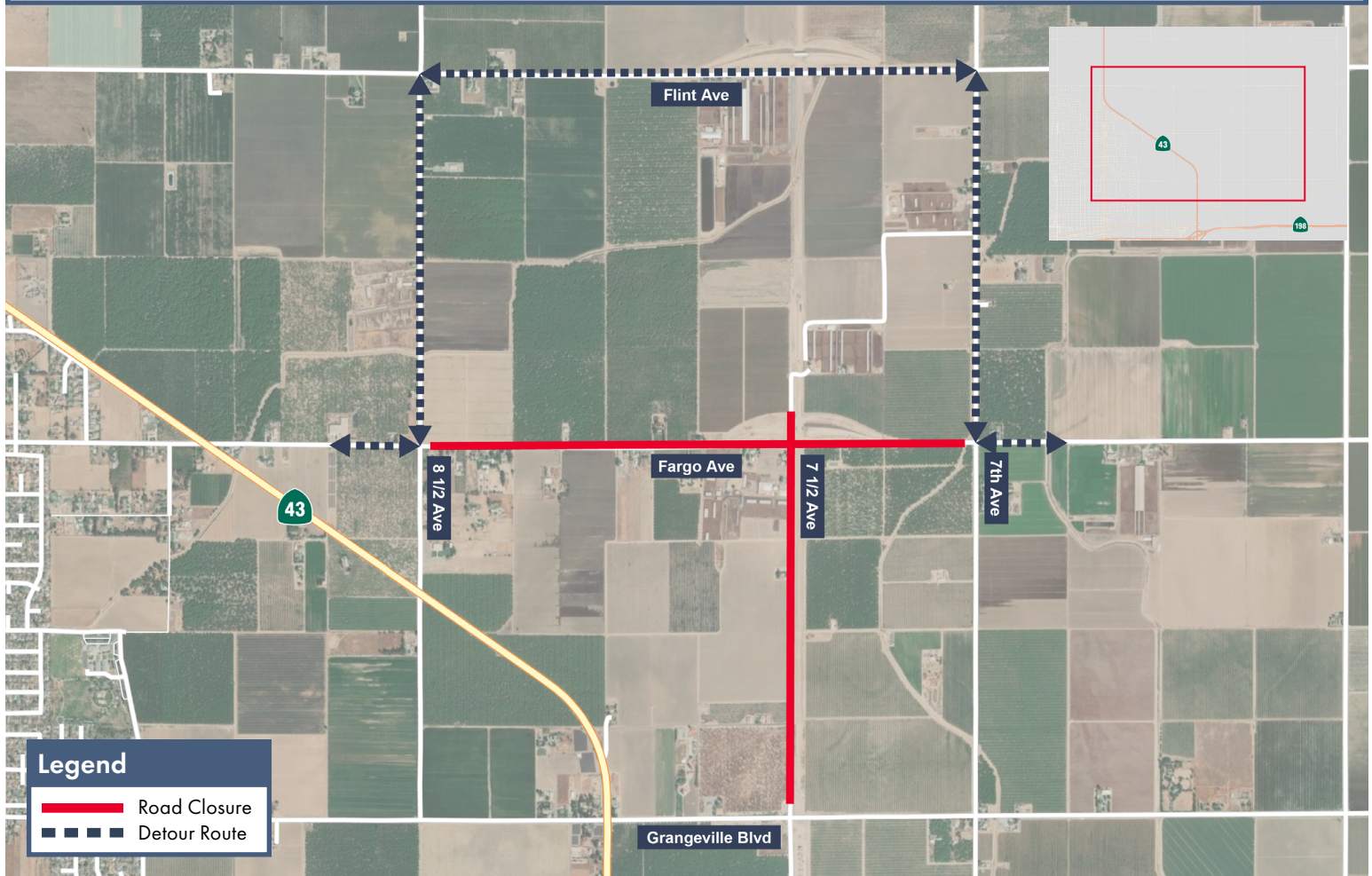
Eastbound Fargo Avenue Detour

Traffic going east on Fargo Avenue will be detoured north on 8 1/2 Avenue, east on Flint Avenue, then south on Seventh Avenue to Fargo Avenue.

Westbound Fargo Avenue Detour

Traffic going west on Fargo Avenue will be detoured north on Seventh Avenue, west on Flint Avenue, then south on 8 1/2 Avenue to Fargo Avenue.

Signage will be in place to direct traffic. Access will be maintained for all property and business owners.



Contact Us:

Augie Blancas
California High-Speed Rail
(559) 720-6695
Augie.Blancas@hsr.ca.gov

Ramiro Diaz
California High-Speed Rail
(559) 577-2246
Ramiro.Diaz@hsr.ca.gov
Para más información en Español.

Rachael Ray
Dragados-Flatiron Joint Venture
(559) 356-7234
pim@dfcp23.com

Scan QR Code For More Information,
Connect To Our Websites And Follow
Us On Social Media. This Information
Is Subject To Change.

